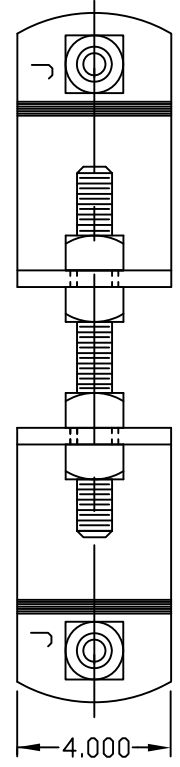
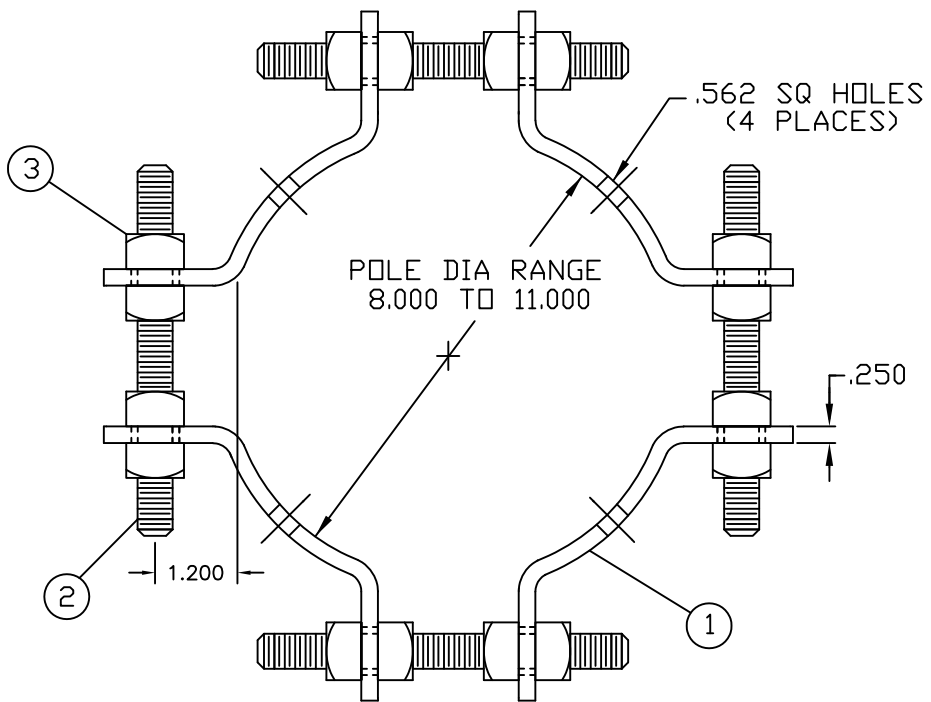


A | B | C | D | E | F

PAPER SIZE		DRAWING NUMBER	
B SIZE		GD-J6644	
REV	REVISION DATE	ECO	
A	06-11-19	09557	



CATALOG #	ITEM	QTY	DESCRIPTION
J6644	1	4	.250 X 4.000 POLE BAND SECTION
	2	4	.750 X 7.000 STUD BOLTS
	3	16	.750 REGULAR SQUARE NUT

NOTES:

- 1) ALL DIMENSIONS ARE REFERENCE AND ARE IN INCHES
- 2) ALL ITEMS ARE HOT DIP GALVANIZED (ASTM A-153)

This drawing contains confidential information that is the property of MacLean Power, L.L.C. ("MacLean"). Use of MacLean's confidential information without MacLean's express written consent is strictly prohibited and may expose you to legal liability. If you believe that you received this material in error, please destroy it or return it to "MacLean Power, L.L.C., 11411 Addison, Franklin Park, Illinois 60131, USA."

TOLERANCES UNLESS SPECIFIED	
	inch
0.XX	± .015
0.XXX	± .005
ANGLE	± 1°



DRAWN BY	ENGINEER	CHECKER	CATALOG #	SCALE	DESIGN DATE
MTT		MTT	J6644	NTS	1-14-94
DRAWING TITLE / DESCRIPTION					DRAWING NUMBER
4-WAY POLE BAND ASSEMBLY					GD-J6644